

## RADIUS - MULTI-SITE MANAGEMENT SOFTWARE

### SW-RADIUS



### DESCRIPTION

OpenEye's RADIUS Multi-Site Management Software solution provides a complete control and administration solution for all OpenEye E-Series and Professional-grade recorders.\*

RADIUS is designed to manage multiple OpenEye recorders in multiple locations from a single workstation. It also offers a rich selection of management tools including remote administration, video backup, interactive mapping, and system configuration.

Designed for a multiple-monitor environment, the RADIUS software platform enables you to simultaneously monitor alarms, retrieve video clips, and review live video from multiple locations.

### HIGHLIGHTS

- » Connect to recorders in multiple locations simultaneously
- » Search video from multiple recorders simultaneously
- » Search live video
- » View cameras from multiple OpenEye recorders on the same screen
- » Access and export recorded video
- » Configure recorders remotely
- » Backup video clips remotely
- » Update recorder software remotely
- » Reduce system resource load with Video Transcoding
- » Control PTZ cameras
- » 360-degree camera support
- » Internet-based maps, such as Google® Maps, integrate flawlessly into custom Map Lists
- » Create custom visual alarms with map manager

\* Excludes EasyDVR and EasyNVR models.

# RADIUS - MULTI-SITE MANAGEMENT SOFTWARE

## ADVANCED MULTI-SITE CAPABILITIES

**Alarm Monitoring:** Keep track of all incoming alarms (including motion, alarm input, and video loss) in real time.

**Multiple User Accounts:** Create an unlimited number of user accounts and manage them with full control of permissions and user privileges.

**Remote Backup:** Perform remote backup of video from any connected recorder.

**POS Integration And Support\*:** Monitor and search POS transactions, creating text filters and alarm events based on product IDs or transaction values.

**Multiple Monitor Support:** Multiple monitors allow you to view live video, search saved video, monitor maps for alarms, and monitor the alarm log simultaneously.

**360 Camera Support:** View footage from 360 cameras when paired with OpenEye Server software v. 5.0. Digital pan, tilt, and zoom functions are supported in both live and recorded video.

### Specialized Searches:

- **Multiple Search:** Simultaneously search video from multiple recorders on a single screen.
- **Preview Search:** Break down a single day of video into 1 hour, 10 minute, and 1 minute blocks of time.
- **POS Search\*:** Search video based on information transmitted during a point of sale transaction.
- **Index Search:** Search video based on sensor, motion, and instant record events.
- **Status Search:** Scroll through a display to see which cameras have recorded video and instantly play video from the selected time.

**Search Sync:** View real-time synced video from two cameras recorded at different rates.

**Global Unique ID Control (GUID):** Assign a static ID number to any camera from any recorder, and open the camera full-screen with pre-assigned keystrokes.

**Compatible With Professional and Commercial Grade Recorders:** Connect to any OpenEye recorder or video server with RADIUS (except EasyDVR).

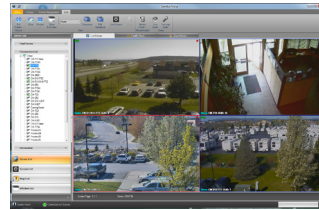
**Windows Compatibility:** With support for Microsoft® Windows® 8, 7, XP and Vista, OpenEye's RADIUS remote software can run on most existing PC systems.

**Remote Configuration:** Change recording schedules, access user permissions, adjust camera settings, and more on all connected recorders.

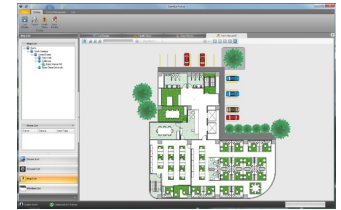
**Custom Maps:** Add floor plans, site maps and internet maps to create custom displays with dynamic icons indicating the locations of cameras, sensors, alarms, and recorders. Link maps together for seamless navigation and enable RADIUS to alert you of alarms as they happen.

\*Requires POS License on connected recorder.

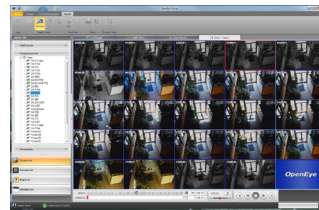
## RADIUS SCREENS



Live Display



Custom Maps



Advanced Searches



Recorder Configuration

## SYSTEM REQUIREMENTS

### Minimum Requirements

- » Intel Dual Core i3 processor (or equivalent)
- » 2 GB of system memory
- Dual monitor: Intel HD Graphics (or equivalent);
- » Quad monitor: NVIDIA GeForce GT 610 (or equivalent)
- » Network connection (Gigabit required for Megapixel)
- » Microsoft Windows® 7 or 8 with DirectX support
- » 1280 x 1024 optimal display resolution

### Recommended Requirements<sup>1</sup>

- » Intel Dual Core i7 processor (or equivalent)
- » 4 GB of system memory
- Dual monitor: Intel HD Graphics (or equivalent);
- » Quad monitor: NVIDIA GeForce GT 610 (or equivalent)<sup>2</sup>
- » Network connection (Gigabit required for Megapixel)<sup>3</sup>
- » Microsoft Windows® 7 or 8 with DirectX support<sup>4</sup>
- » 1080p optimal display resolution

<sup>1</sup> Highly recommended for H.264 solutions and Megapixel image rendering.

<sup>2</sup> FireMV, NVS and CAD cards are not supported. SLI/Crossfire not supported.

<sup>3</sup> For specific bandwidth requirements refer to OpenEye System Configurator.

<sup>4</sup> No support for server operating systems.

## RADIUS SOFTWARE

**SW-RADIUS** Multi-Site Management Software  
(OpenEye Recorder Required)



23221 E Knox Ave  
Liberty Lake, WA 99019  
1.888.542.1103



26106AO

©2015 OpenEye. All Rights Reserved. Information contained in this document is subject to change without prior notice. OpenEye does its best to provide accurate information but cannot be held responsible for typos or mistakes.