



**Engineered Steel Frame Rated for 150 MPH Windload**

**Rust-Proof Aluminum Exterior & Interior Walls**

**UL Approved**

**Modular Building State Label Where Required**

**Custom Colors & Graphics with Matthews Urethane Paint  
(3) Colors Standard with Stipple Finish**

**One Year Warranty (HVAC unit warranty by mfg.)**

**OPTIONS:**

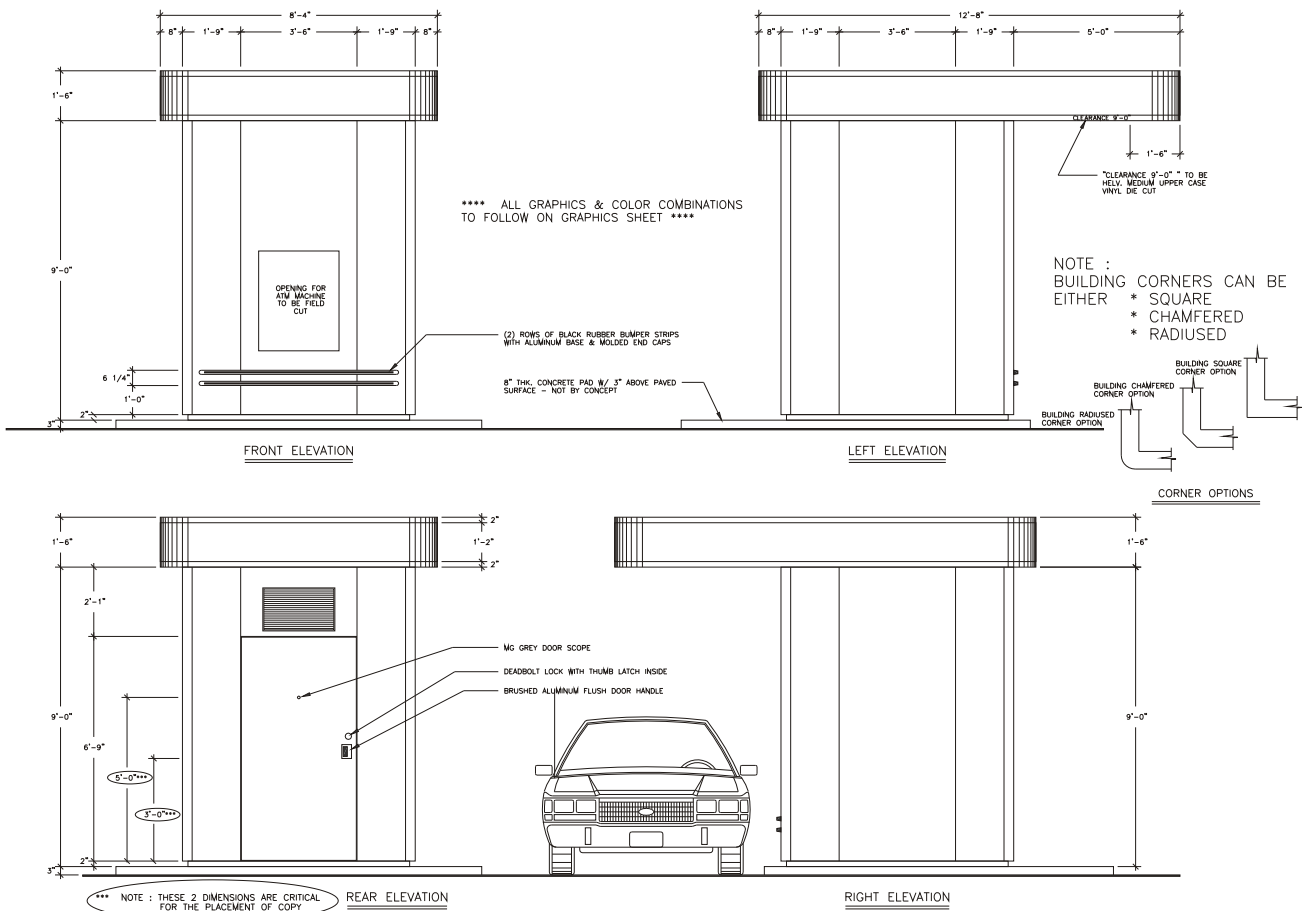
- \* envelope holder
- \* waste receptacle
- \* POS panel
- \* network panel

# 7'-0" X 7'-0" KIOSK WITH CANOPY MODEL 300



**CONCEPT  
UNLIMITED, Inc.**

*From Concept to Completion, quality ATM enhancements and architectural signage*



Drawing 95-090

Please call your Concept representative to confirm correct drawing for your particular application.  
 10020 Farrow Road Columbia, SC 29203 (803) 755-9100 1-800-345-1444 Fax (803) 755-9244  
 www.conceptunlimited.com sales@conceptunlimited.com