

# DRIVE-UP WITH CANOPY MODEL 200



**Engineered Steel Frame Rated for  
150 MPH Windload**

**Rust-Proof Aluminum Exterior &  
Interior Walls**

**Patented "Linear Track" Delivery  
System**

**UL Approved**

**Modular Building State Label Where  
Required**

**Custom Colors & Graphics  
with Matthews Urethane Paint  
(3) Colors Standard with Stipple Finish**

**One Year Warranty  
(HVAC unit warranty by mfg.)**

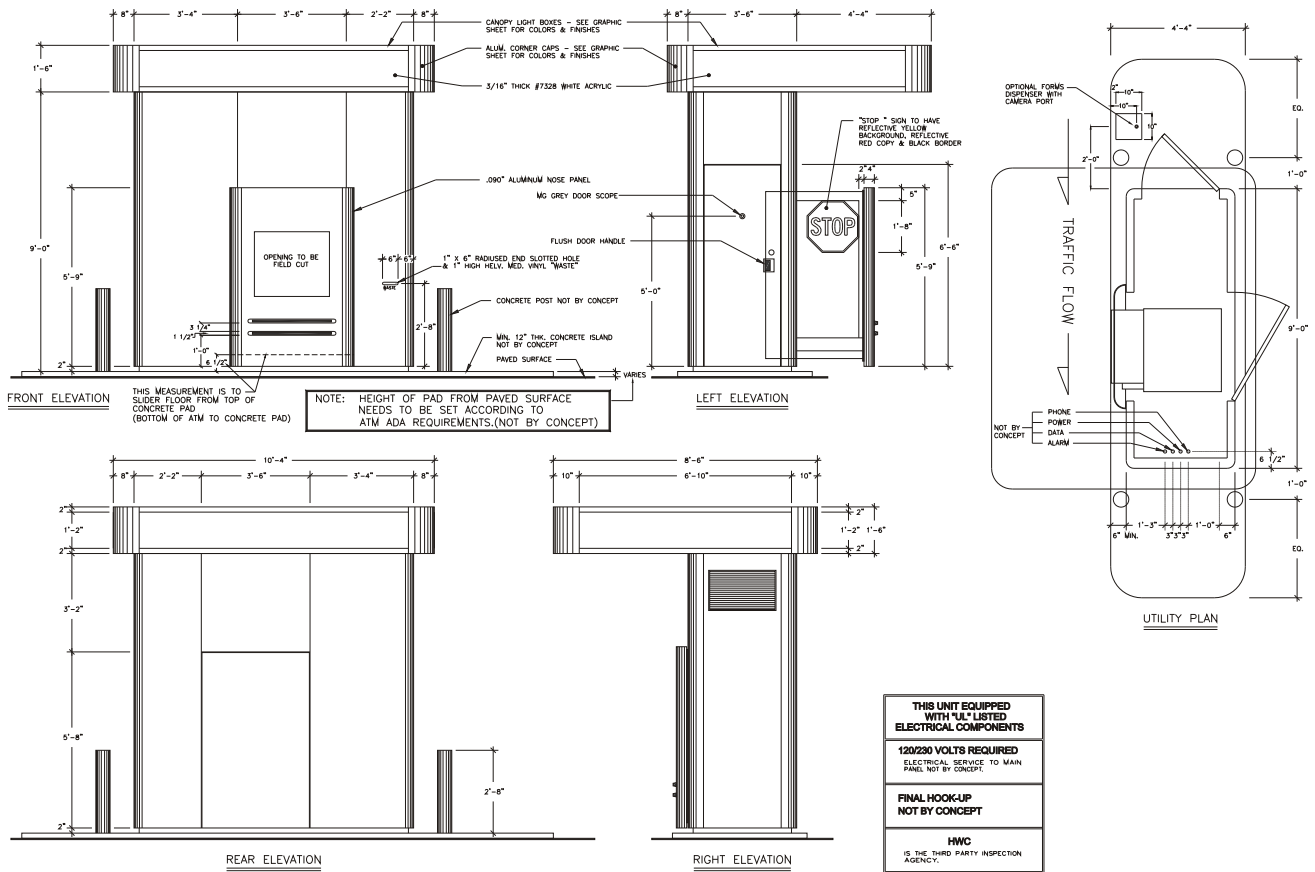
**OPTIONS:**

- \* electrical room
- \* envelope holder
- \* waste receptacle
- \* POS panel
- \* network panel

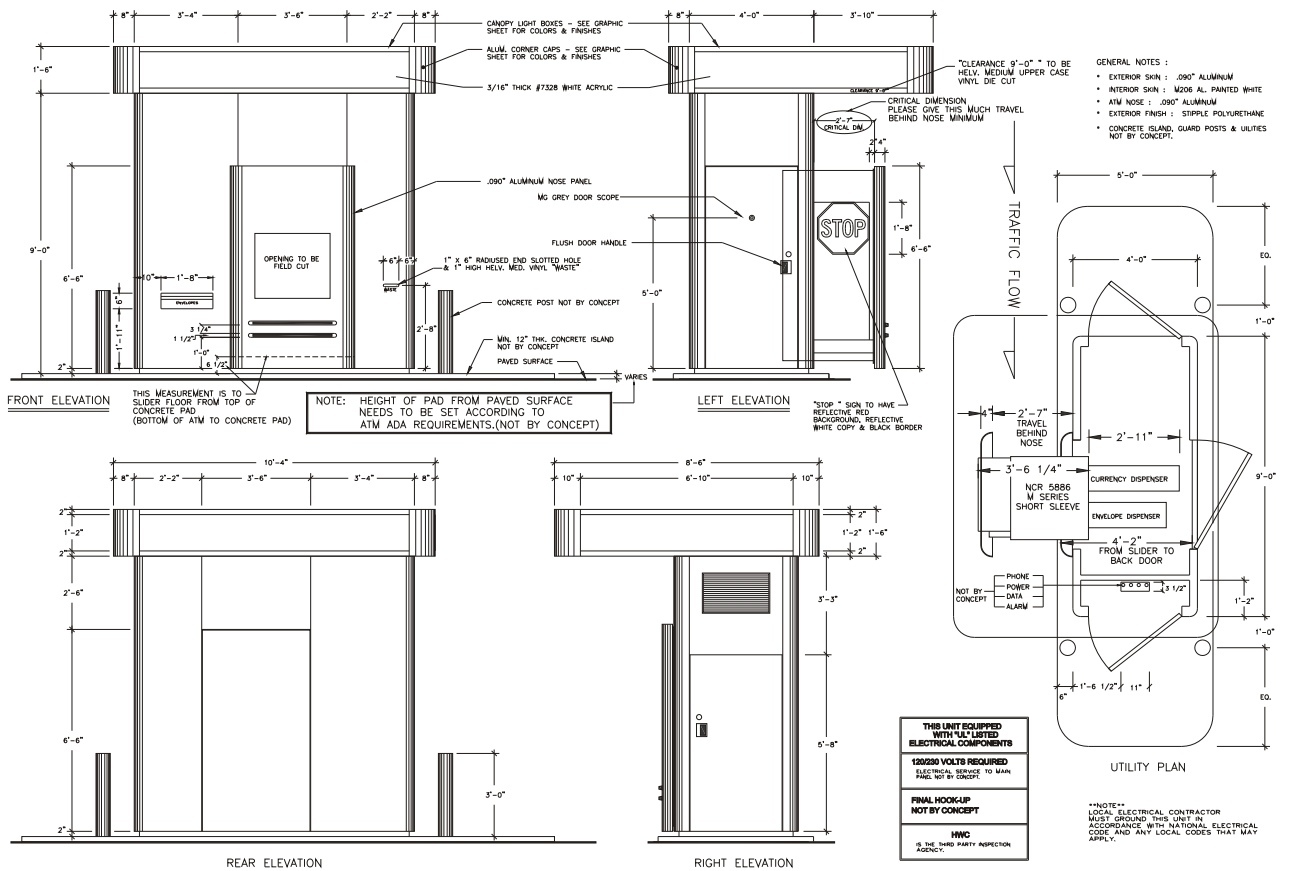
*From Concept to Completion, quality ATM enhancements and architectural signage*



**CONCEPT  
UNLIMITED, Inc.**



Drawing 96-050



Drawing B-1703

Please call your Concept representative to confirm correct drawing for your particular application.  
 10020 Farrow Road Columbia, SC 29203 (803) 755-9100 1-800-345-1444 Fax (803) 755-9244  
 www.conceptunlimited.com sales@conceptunlimited.com