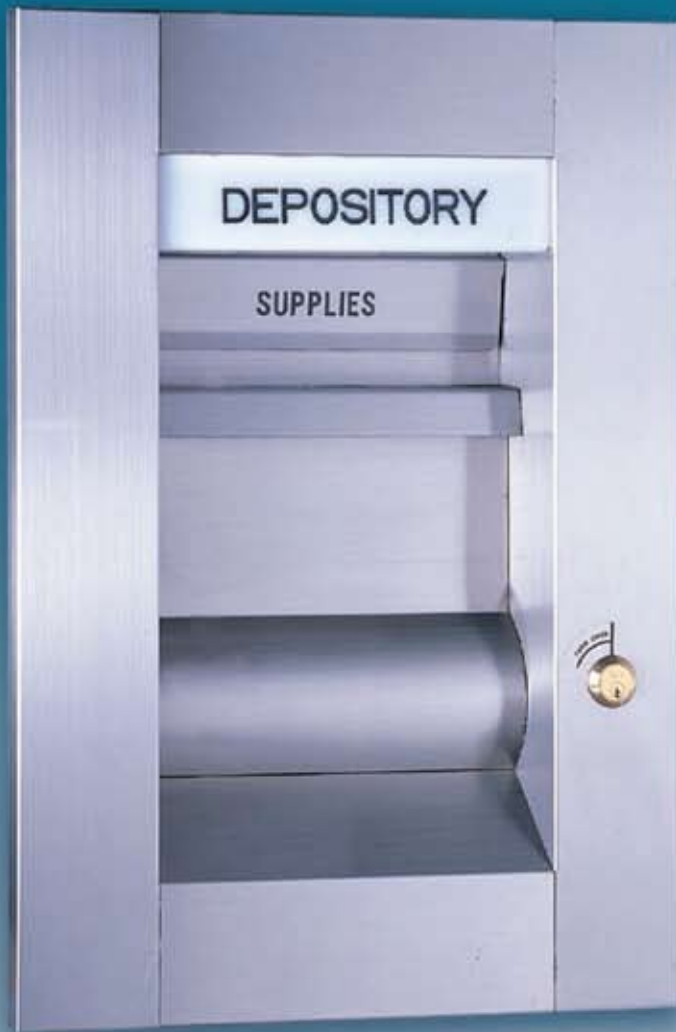


BRIDGEMAN

NIGHT DEPOSITORY



Night Depository

Outside dimensions: 33 1/2" High, 23 1/4" Wide, 28" Deep.



Features

- Manually operated U.L. listed night depository meets and exceeds U.L. standard 771 for after hours deposits of envelopes and currency when properly installed with U.L. listed chest and alarm protection.
- Exterior depository face finished in high grade, polished stainless steel. Minimum maintenance is required to retain its appearance.
- Bag opening secured by heavy duty, corrugated, pin tumbler lock.
- Unique receptacle design insures positive movement of deposit into receiving safe.
- Contemporary styling includes a recessed door. This provides a handy writing surface for the customer.
- The exterior face and the deposit compartment is illuminated at all times by a light unit built into the frame of the depository. This unit is protected against tampering and is readily accessible for replacement.
- Convenient, weather-protected forms compartment.
- An alarm contact switch is incorporated into the design for easy attachment to alarm systems. This contact will be activated if forced removal is attempted.
- Designed for either walk-up or drive-up installation.
- Compatible with ATM activation for receipt and photo ID.

Bridgeman Night Depository

An envelope and bag depository

With standard capabilities for both envelope and bag deposits, our single door night depository provides customer access for both envelope and bag operations. The envelope opening allows access without the use of a key, while the bag opening requires a key to be accessed.

The large capacity bag deposit compartment is exposed only when the required key has operated the lock in the depository frame. Twenty-five of these keys are supplied with the Bridgeman Night Depository, which is also available with bag only operation that requires a key with each use.

U.L. Security tested

The Bridgeman Night Depository bears the Underwriters Laboratories label and has passed the U.L. tests involving attack by mechanical tools and the use of sophisticated fishing and trapping techniques.

BRIDGEMAN

Bridgeman Security Equipment

510 West Washington Blvd.
Montebello, CA 90640
(323) 724-5880 Telephone
(800) 334-6060 Toll Free
(323) 727-0236 Fax
bridgeman@socalSAFE.com

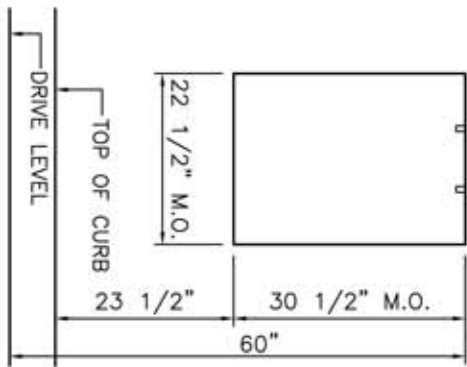


U.L. Listed

All specifications subject to change without notice.
©1993-2003 Bridgeman Security Equipment.

SINGLE J-BOX WITH 3/4" CONDUIT AND COVER PLATE FOR ALARM AND VIDEO

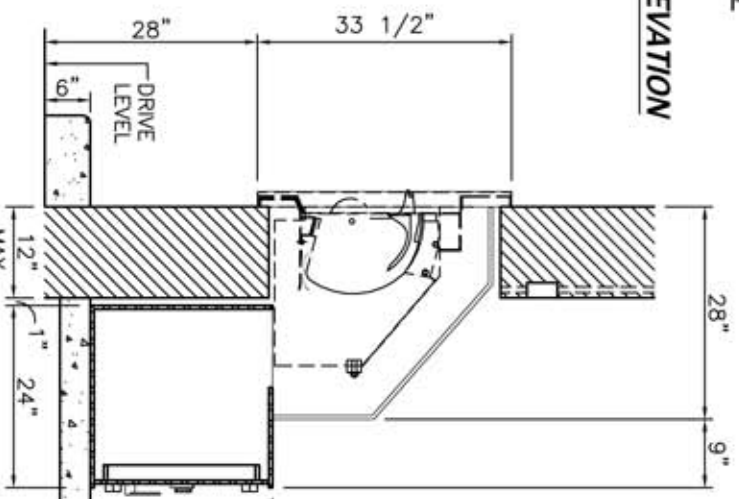
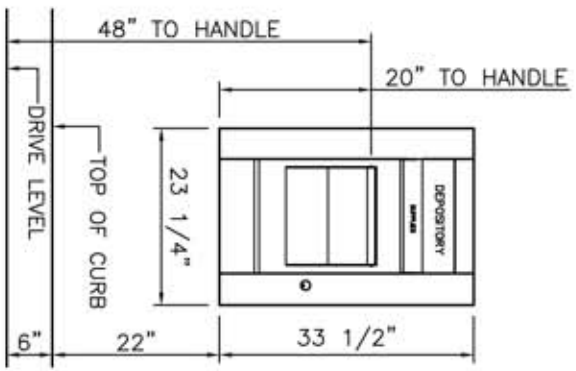
SINGLE J-BOX WITH 3/4" CONDUIT AND COVER PLATE FOR 120V 15A SERVICE TO DEPOSITORY SIGN



NOTE:

1. IF DRIVE LEVEL AND FINISHED FLOOR ELEVATIONS ARE NOT AS SHOWN NOTIFY FOR SPECIAL CONFIGURATION
2. RECOMMEND NIGHT DEPOSITORY SHOULD BE PLACED UNDER CANOPY
3. HIGH LIGHTING MUST BE PROVIDED
4. RECOMMEND (2) 3/8" BOLTS IN BOTTOM TO ANCHOR SAFE
5. INTERIOR WALL OPENING AROUND OUTER HOUSING IS TO BE FILLED (BY OTHERS) USING APPROPRIATE MATERIALS

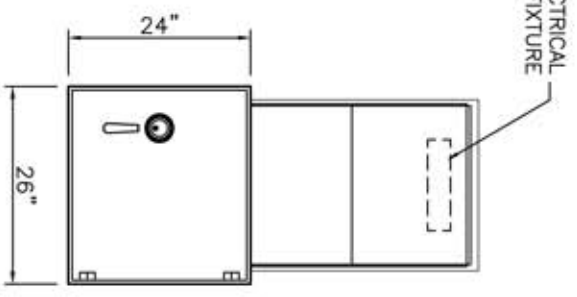
WALL OPENING EXTERIOR ELEVATION



EXTERIOR ELEVATION

DEPOSITORY ASSEMBLY VERTICAL SECTION

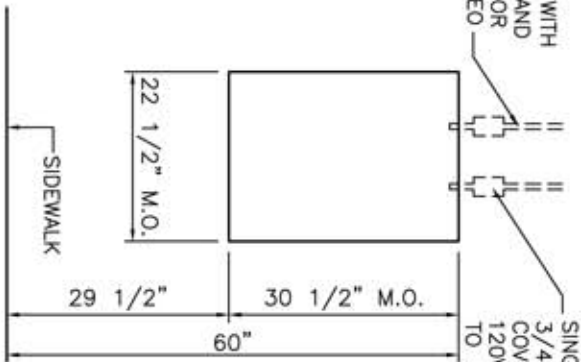
INTERIOR ELEVATION



FINISH: COLOR	DOOR: RIGHT	BRIDGEMAN SECURITY EQUIPMENT Montebello, CA	PREPARED FOR:	DRAWING NAME: 305 Night Depository/24
DRAWN BY: CWP	APPROVED BY:	REVISID: 10/11/06	PROJECT NAME:	DRAWING NUMBER: Bridgeman DU 242624
			SHEET: 1 OF 1	

SINGLE J-BOX WITH 3/4" CONDUIT AND COVER PLATE FOR ALARM AND VIDEO

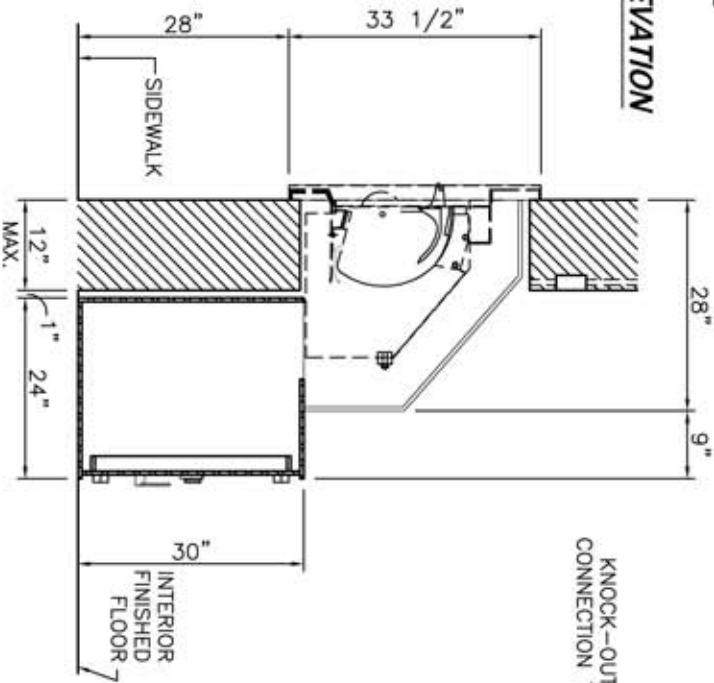
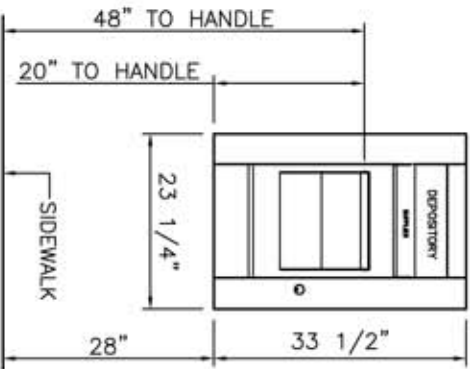
SINGLE J-BOX WITH 3/4" CONDUIT AND COVER PLATE FOR 120V 15A SERVICE TO DEPOSITORY SIGN



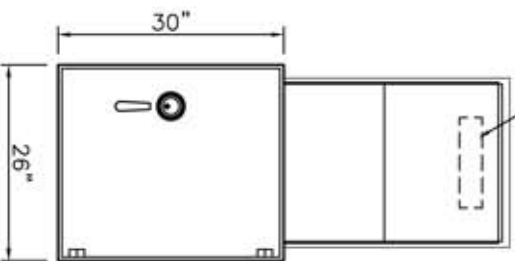
NOTE:

1. IF DRIVE LEVEL AND FINISHED FLOOR ELEVATIONS ARE NOT AS SHOWN NOTIFY FOR SPECIAL CONFIGURATION
2. RECOMMEND NIGHT DEPOSITORY SHOULD BE PLACED UNDER CANOPY
3. HIGH LIGHTING MUST BE PROVIDED
4. RECOMMEND (2) 3/8" BOLTS IN BOTTOM TO ANCHOR SAFE
5. INTERIOR WALL OPENING AROUND OUTER HOUSING IS TO BE FILLED (BY OTHERS) USING APPROPRIATE MATERIALS

WALL OPENING EXTERIOR ELEVATION



KNOCK-OUT FOR ELECTRICAL CONNECTION TO LIGHT FIXTURE



EXTERIOR ELEVATION

DEPOSITORY ASSEMBLY VERTICAL SECTION

INTERIOR ELEVATION

FINISH: COLOR	DOOR: RIGHT	BRIDGEMAN SECURITY EQUIPMENT Montebello, CA	PREPARED FOR:	DRAWING NAME: 305 Night Depository/30
DRAWN BY: CWP	APPROVED BY:	REVISD:	PROJECT NAME:	DRAWING NUMBER: Bridgeman WU 302624
		10/11/06		SHEET: 1 OF 1